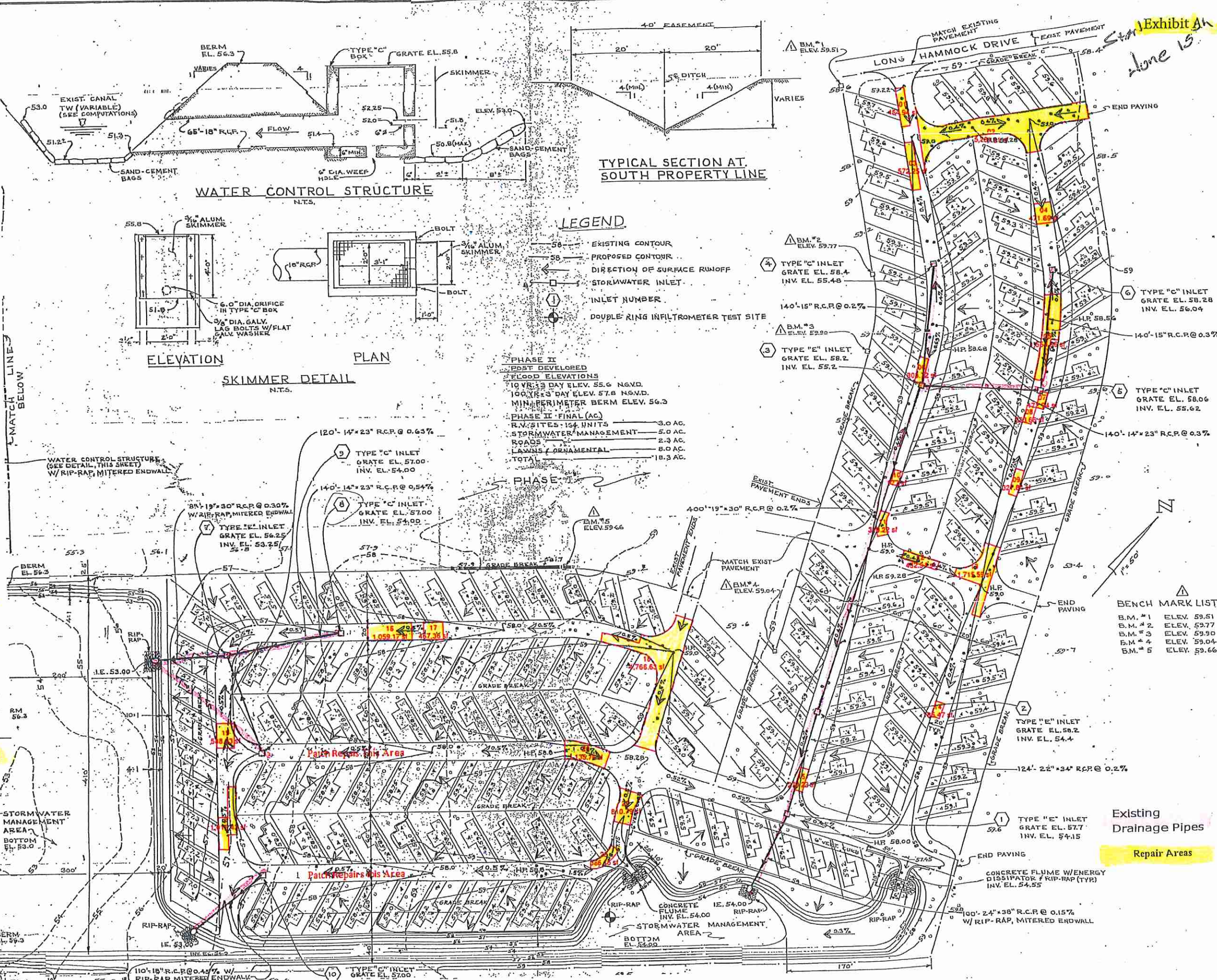


River Ranch

Conc	SF
1	455
2	5,281
3	573
4	472
5	1,555
6	304
7	173
8	224
9	328
10	177
11	320
12	433
13	1,716
14	186
15	280
16	1,060
17	468
18	4,767
19	589
20	1,136
21	1,017
22	811
23	387

22,712



MATCH LINES BELOW

Exhibit A
June 15

WATER CONTROL STRUCTURE
N.T.S.

TYPICAL SECTION AT SOUTH PROPERTY LINE

ELEVATION

PLAN

SKIMMER DETAIL
N.T.S.

LEGEND

- 58 — EXISTING CONTOUR
- 58 — PROPOSED CONTOUR
- DIRECTION OF SURFACE RUNOFF
- STORMWATER INLET
- ① INLET NUMBER
- ⊙ DOUBLE RING INFILTRATOR TEST SITE

PHASE II
POST DEVELOPED
FLOOD ELEVATIONS
10 YR. 3 DAY ELEV. 55.6 NGVD.
100 YR. 3 DAY ELEV. 57.8 NGVD.
MIN. PERIMETER BERM ELEV. 56.3

PHASE II FINAL (AC)
R.V. SITES - 154 UNITS — 3.0 AC.
STORMWATER MANAGEMENT — 5.0 AC.
ROADS — 2.3 AC.
LAWNS / ORNAMENTAL — 8.0 AC.
TOTAL — 18.3 AC.

BENCH MARK LIST

B.M. #1	ELEV. 59.51
B.M. #2	ELEV. 59.77
B.M. #3	ELEV. 59.90
B.M. #4	ELEV. 59.04
B.M. #5	ELEV. 59.66

Designed	Drawn	Checked	Approved	Job No.	ADD'D	BLM'S	ET
				15-1515	1		
RIVER RANCH, INC. dba OUTDOOR RESORTS RIVER RANCH PHASE II E.V. LOTS PAVING, GRADING & DRAINAGE PLAN							
ENVIORS, Inc. Consulting Civil & Environmental Engineers, Economists, and Planners 100 BOX 2208 WINTER HAVEN, FL 33881-8308 (813) 924-1112							
SHEET NUMBER 5							